


BlueSuite Pro3

Graphical test & analysis software for the MT8852B



BlueSuite Pro3



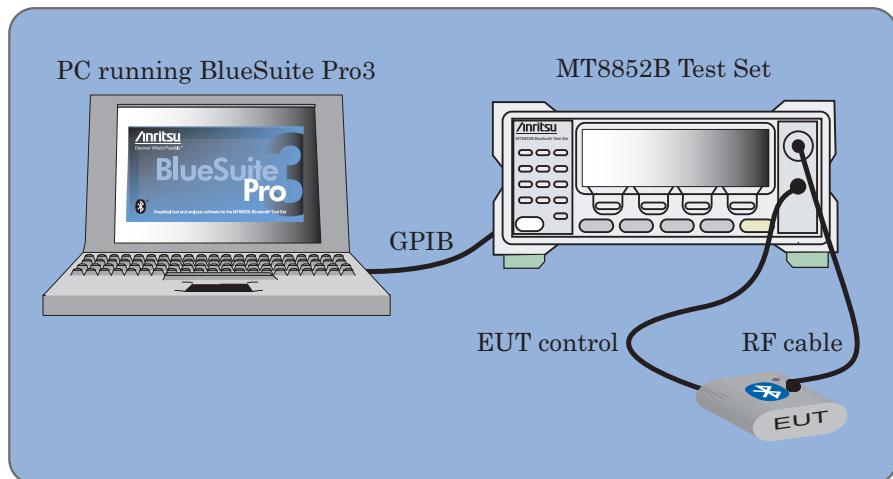
Introducing BlueSuite Pro3

BlueSuite Pro3 is a powerful software package designed for use with the MT8852B Bluetooth Test Set.

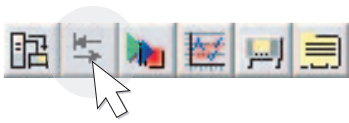
BlueSuite Pro3 allows you to:-

- View EUT packets through the display of frequency deviation, power burst profile, IQ constellation, and vector graphs.
- Configure and run sensitivity sweeps and display the results graphically.
- Configure and run measurement sweeps for seven different tests and display the results graphically for each of the 79 Bluetooth channels.
- Configure and run audio tests and display the results graphically.
- Configure and run a power control test and display the results graphically.
- Read and write script and limit settings to and from the MT8852B.
- Edit and run a complete test script and generate a detailed report of the results.
- Step through individual connection and test mode controls to determine the cause of problems otherwise difficult to isolate.

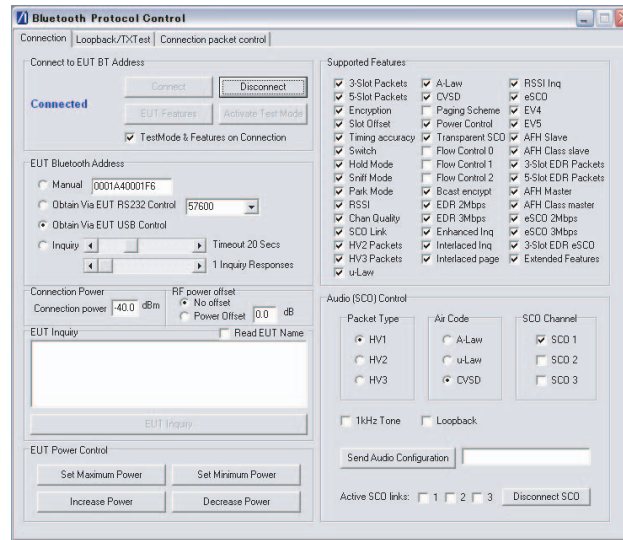
Configure the instrument and establish a GPIB connection with the MT8852B.



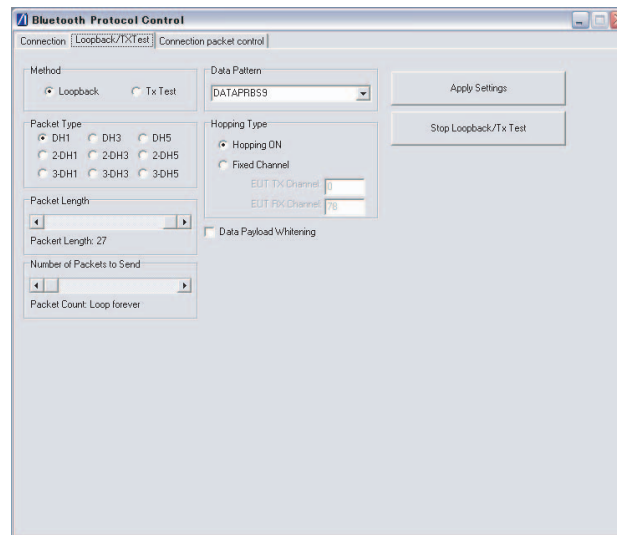
Establish a Bluetooth connection



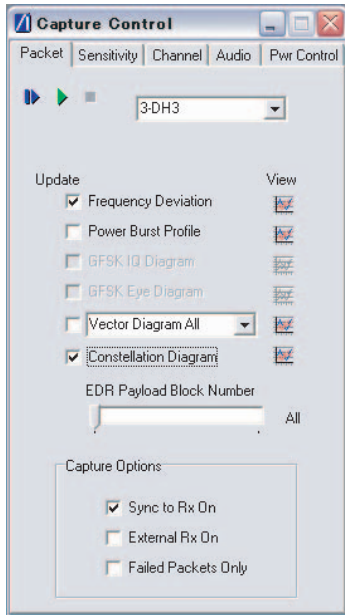
Use the [Bluetooth Protocol Control] window to establish a Bluetooth connection, activate test mode, and read the EUT supported features. The SCO settings of the EUT can be fully controlled to facilitate audio testing and validate SCO functionality.



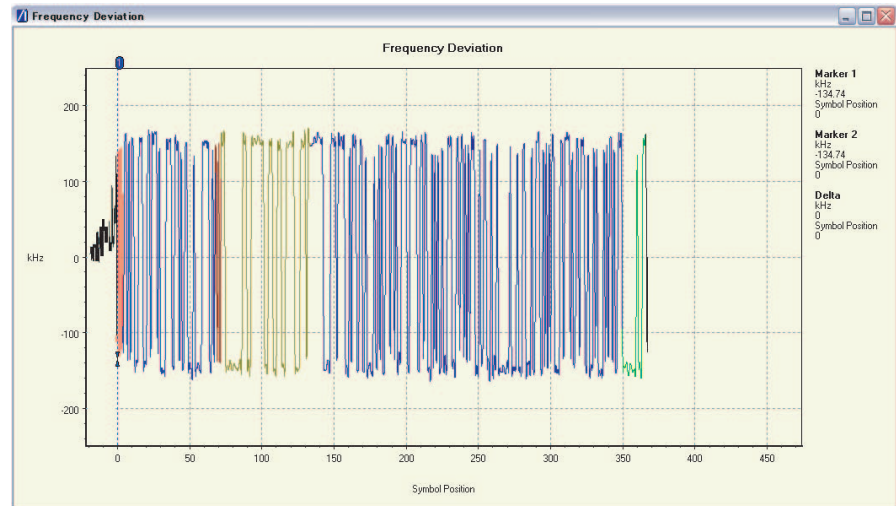
Send individual test controls to the EUT and loop back packets for graphical viewing and analysis.



View Standard Rate and EDR Packets

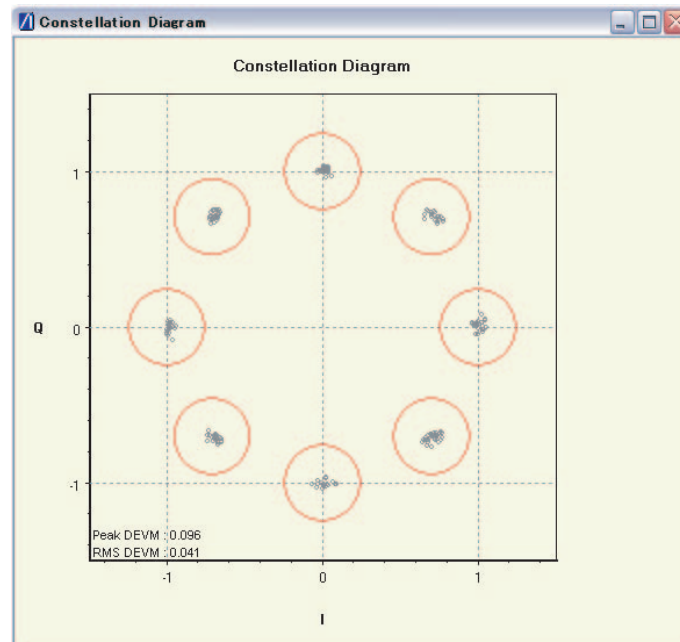


Open the [Capture Control] dialog, select the required analysis mode and click Run or Run Continuous. Both standard rate GFSK and EDR ($\pi/4$ DQPSK and 8DPSK) modulated packets can be analyzed in detail by selecting from a number of waveform options: Frequency Deviation vs Symbol, Power Burst Profile, Vector diagrams, and Constellation diagrams. Use free run triggering for continuous monitoring, or select the “Failed Packets Only” trigger to capture intermittent faults within the EUT. Two markers plus print and file saving features optimize traces for archiving or inclusion in reports.



DH1 Frequency Deviation Trace

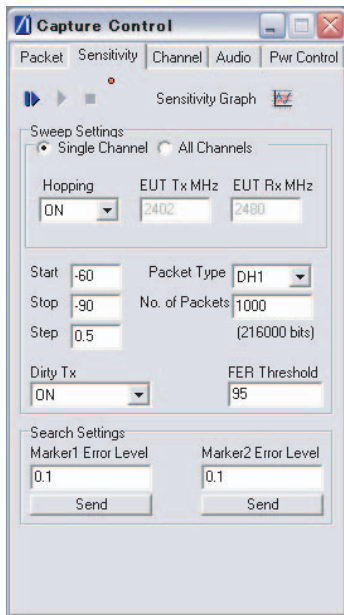
Color coding in trace identifies preamble, access code, header, payload, and CRC.



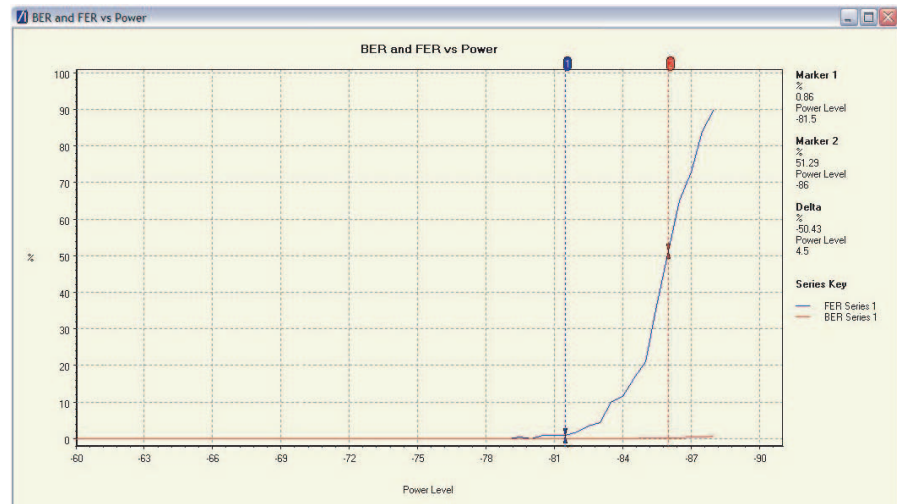
8DPSK Constellation Diagram

Displays all payload symbols or individual 50 μ s blocks.

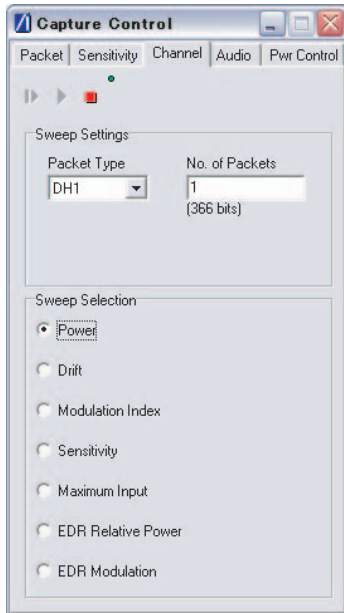
Sensitivity Sweeps Simplified



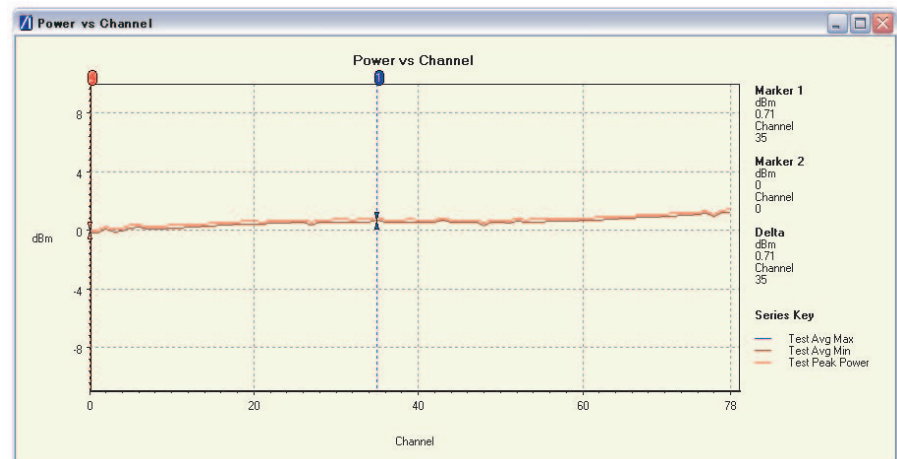
Select the [Sensitivity] tab to analyze the EUT receiver sensitivity performance in detail. Select between EUT sensitivity sweeps with hopping ON or selected individual channels with hopping OFF. Full EUT sensitivity on each channel is automated, reducing test time to a minimum. Both Frame Error and Bit Error Rates are displayed.



Receiver sensitivity search with traces for FER and BER.

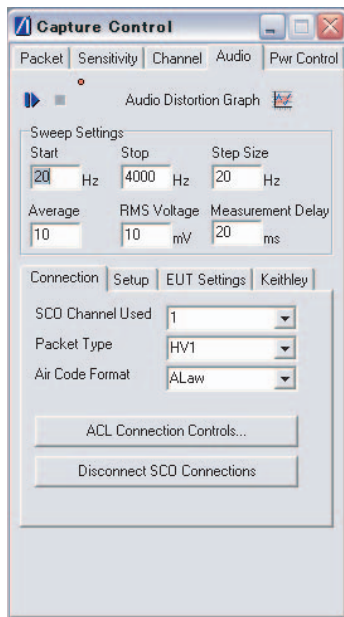


Click the [Channel] tab to characterize the EUT performance on each of the 79 Bluetooth channels. This test suite verifies that all channels are performing to specification and isolates faults that may not appear in routine testing. Maximum and minimum average packet power levels as well as peak symbol power are displayed for each frequency.

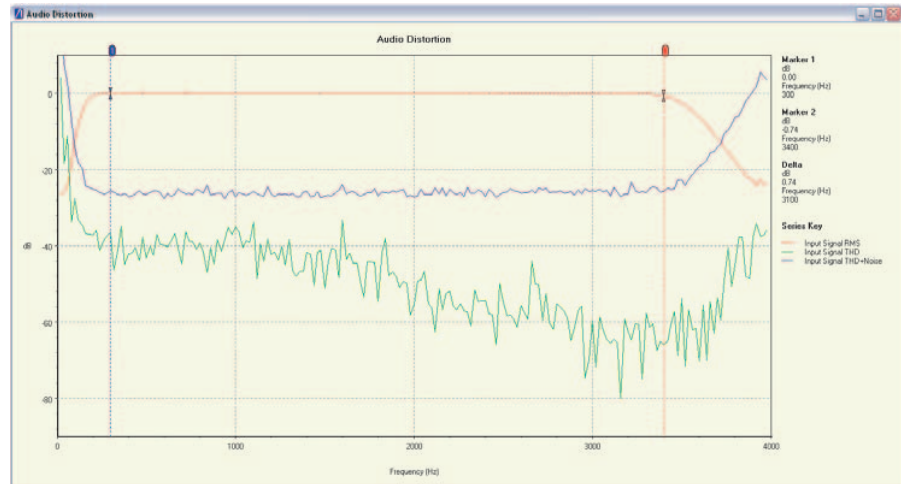


EUT GFSK output power on all channels.

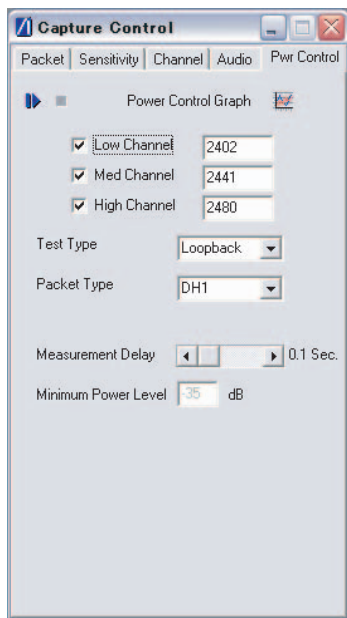
Automated Audio Analysis



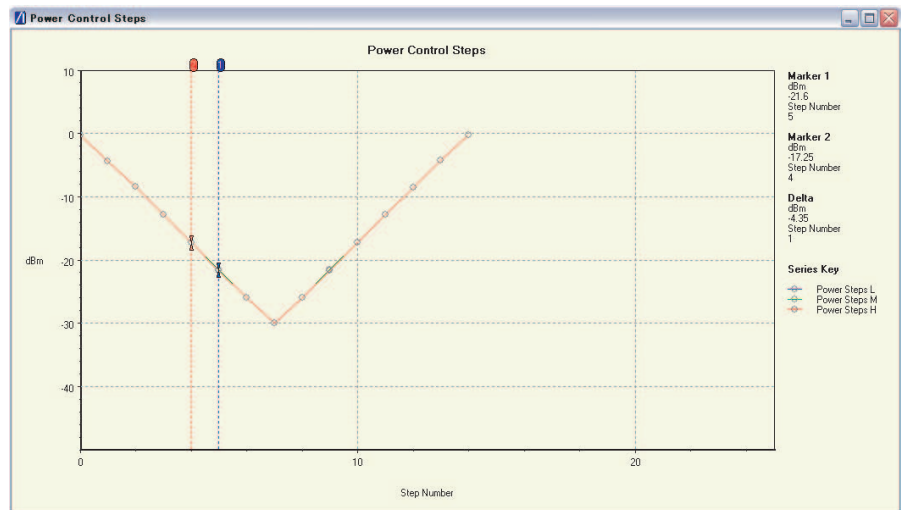
Use the [Audio] tab to quickly test the EUT audio frequency response and distortion. BlueSuite Pro3 controls the MT8852B and a Keithley 2015 audio generator/analyzer to fully automate audio measurements.



Automated SCO frequency response and distortion traces.



Select the [Pwr Control] tab to view the power ramping characteristics of EUTs supporting power control.

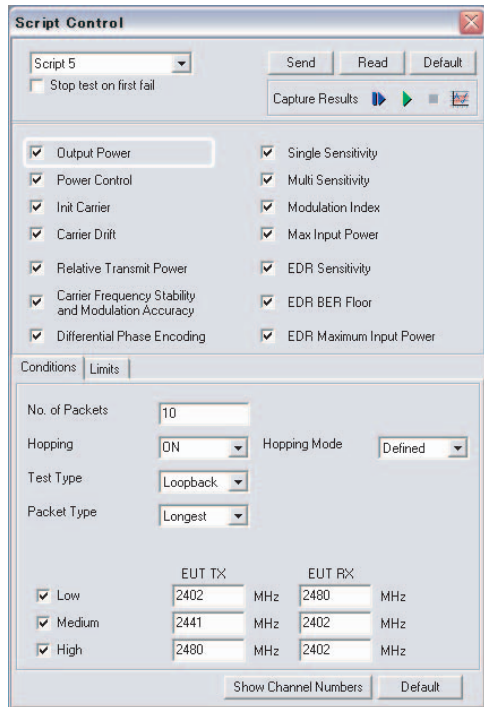


EUT power control showing individual step powers and sizes.

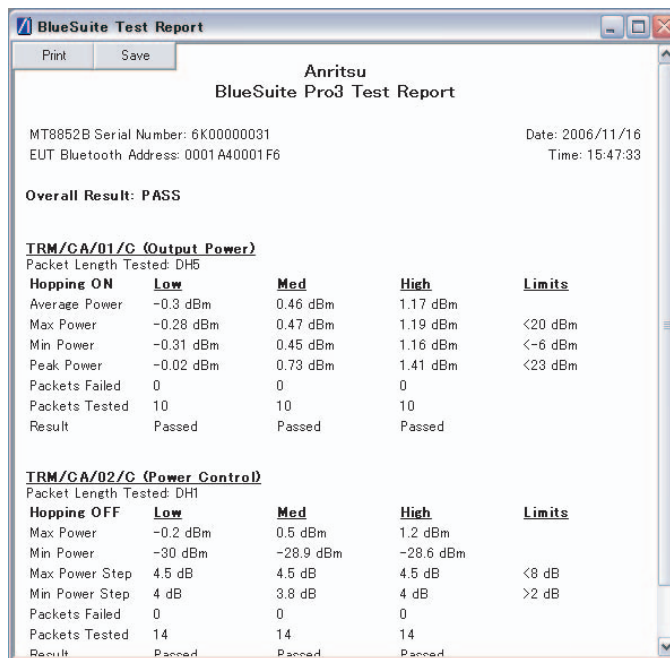
Generate and run a test script



Open the [Script Control] dialog to define and execute test scripts on the MT8852B and create test reports for archiving and analysis. The resultant test reports are clearly formatted and form the basis of test records for EUTs in development.



[Script Control] for definition and execution of test scripts.



Automatically generated test report.

ANRITSU CORPORATION

5-1-1 Onna, Atsugi-shi, Kanagawa, 243-8555 Japan
 Phone: +81-46-223-1111
 Fax: +81-46-296-1264

- Australia

ANRITSU PTY LTD.
 Unit 3/170 Forster Road Mt. Waverley,
 Victoria, 3149, Australia
 Phone: +61-3-9558-8177
 Fax: +61-3-9558-8255

- Brazil

ANRITSU ELETRÔNICA LTDA
 Praça Amadeu Amaral, 27-1 andar
 01327-010 - Paraiso, Sao Paulo, Brazil
 Phone: +55-11-3283-2511
 Fax: +55-11-3886940

- Canada

ANRITSU ELECTRONICS LTD.
 700 Silver Seven Road, Suite 120, Kanata,
 ON K2V 1C3, Canada
 Phone: +1-613-591-2003
 Fax: +1-613-591-1006

- Denmark

ANRITSU A/S
 Kirkebjerg All 90 DK-2605 Brøndby, Denmark
 Phone: +45-72112200
 Fax: +45-72112210

- Finland

ANRITSU AB
 Teknobulevardi 3-5, FI-01530 Vantaa, Finland
 Phone: +358-9-4355-220
 Fax: +358-9-4355-2250

- France

ANRITSU S.A.
 9, Avenue du Québec Z.A. de Courtaboeuf 91951 Les
 Ulis Cedex, France
 Phone: +33-1-60-92-15-50
 Fax: +33-1-64-46-10-65

- Germany

ANRITSU GmbH
 Nemetschek Haus Konrad-Zuse-Platz 1 81829
 München, Germany
 Phone: +49 (0) 89 442308-0
 Fax: +49 (0) 89 442308-55

- Hong Kong

ANRITSU COMPANY LTD.
 Suite 923, 9/F., Chinachem Golden Plaza, 77 Mody
 Road, Tsimshatsui East, Kowloon, Hong Kong, China
 Phone: +852-2301-4980
 Fax: +852-2301-3545

- India

ANRITSU CORPORATION India Liaison Office
 Unit No.S-3, Second Floor, Esteem Red Cross Bhavan,
 No.26, Race Course Road, Bangalore 560 001 India
 Phone: +91-80-30944707

- Italy

ANRITSU S.p.A.
 Via Elio Vittorini, 129, 00144 Roma EUR, Italy
 Phone: +39-06-509-9711
 Fax: +39-06-502-2425

- Korea

ANRITSU CORPORATION
 8F Hyun Juk Bldg. 832-41, Yeoksam-dong,
 Kangnam-ku, Seoul, 135-080, Korea
 Phone: +82-2-553-6603
 Fax: +82-2-553-6604

- P. R. China

ANRITSU COMPANY LTD.
 Beijing Representative Office
 Room 1515, Beijing Fortune Building, No. 5 North Road,
 the East 3rd Ring Road, Chao-Yang District
 Beijing 100004, P.R. China
 Phone: +86-10-6590-9230

- Singapore

ANRITSU PTE LTD.
 10, Hoe Chiang Road #07-01/02, Keppel Towers,
 Singapore 089315
 Phone: +65-6282-2400
 Fax: +65-6282-2533

- Sweden

ANRITSU AB
 Borgafjordsgatan 13 164 40 Kista, Sweden
 Phone: +46-853470700
 Fax: +46-853470730

- Taiwan

ANRITSU COMPANY INC.
 7F, No. 316, Sec. 1, NeiHu Rd., Taipei, Taiwan
 Phone: +886-2-8751-1816
 Fax: +886-2-8751-1817

- U.K.

ANRITSU LTD.
 200 Capability Green, Luton, Bedfordshire LU1 3LU, U.K.
 Phone: +44-1582-433280
 Fax: +44-1582-731303

- U.S.A.

ANRITSU COMPANY
 1155 East Collins Boulevard,
 Richardson, Texas 75081
 Toll Free: 1-800-ANRITSU (267-4878)
 Phone: +1-972-644-1777
 Fax: +1-972-644-3416

Ordering information:

Part number	Item
MX885201B	BlueSuite Pro3
MX885201B-301	Upgrade from BlueSuite Pro2 to BlueSuite Pro3

The *Bluetooth* word mark and logos are owned by the *Bluetooth* SIG, Inc. and any use of such marks by Anritsu is under license. Other trademarks and trade names are those of their respective owners.

Data subject to change without notice. For the most recent specification visit: www.eu.anritsu.com

